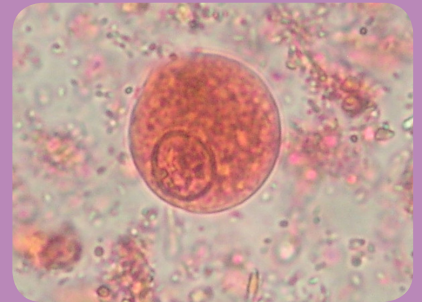
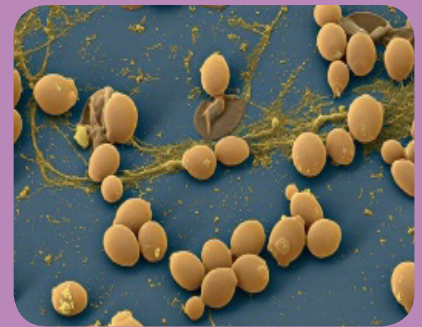




Parasitic serology Mycology



The reference tests in Parasitic Serology and Mycology

- **A wide range in Indirect haemagglutination (I.H.A) and Latex:**

Amibiasis, Echinococcosis / Hydatidosis, Toxoplasmosis, Distomatosis / Fasciolosis, Bilharziasis / Schistosomiasis, Aspergillosis, Candidiasis

- **Complete kits, controls included, stability 24 months**

- **Simple technique, visual reading**

- **Delivery at room temperature**

- **Excellent sensitivity and specificity, bibliography and WHO referencing**

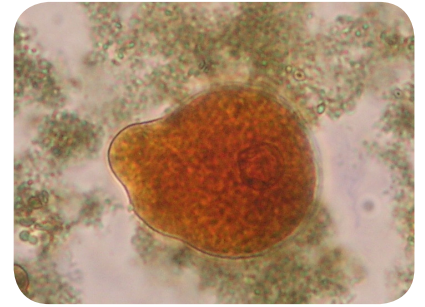




AMOEBIASIS

Parasitic infection caused by a protozoan (*Amoeba*).
This is the third deadliest parasitosis.

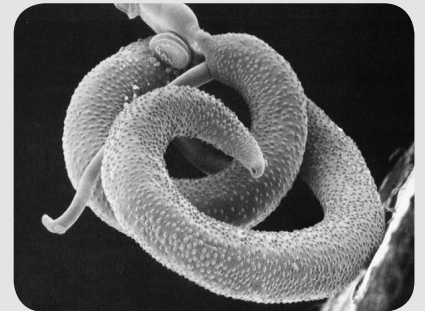
Amibiassis I.H.A FUMOUGE® (indirect haemagglutination) REF 482200
Bichro-Latex Amibe FUMOUGE® (latex agglutination) REF 534000



BILHARZIASIS / SCHISTOSOMIASIS

Parasitic infection caused by schistosomes (Flatworms).
This is the second most deadly parasitosis.

Bilharziasis FUMOUGE® (indirect haemagglutination) REF 514000



DISTOMATOSIS / FASCIOLOSIS

Parasitic infection caused by a trematode (*Fasciola hepatica*).

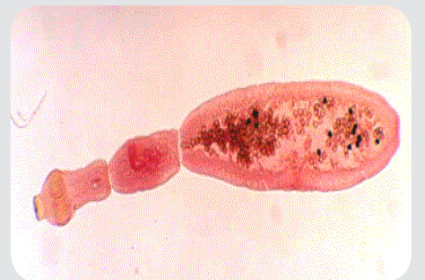
Distomatosis FUMOUGE® (indirect haemagglutination) REF 524600



ECHINOCOCCOSIS / HYDATIDOSIS

Parasitic infection caused by helminth (*Echinococcus granulosus*)

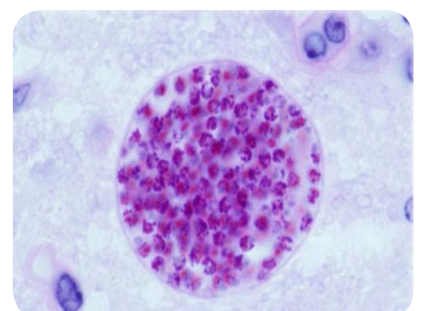
Hydatidosis FUMOUGE® (indirect haemagglutination) REF 524800



TOXOPLASMOSIS

Parasitic infection caused by a protozoan (*Toxoplasma gondii*).

Toxo-HAI FUMOUGE® (indirect haemagglutination) REF 525000
Toxolatex FUMOUGE® (latex agglutination) REF 522400

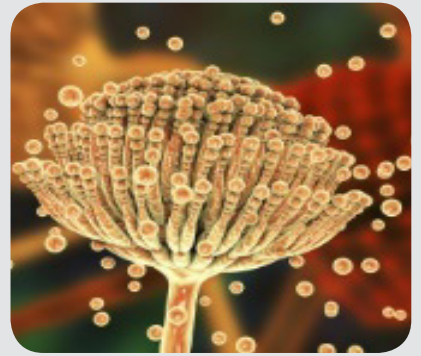




ASPERGILLOSIS

Infection caused by fungus (*Aspergillus fumigatus*).
Aspergillosis induces pulmonary disease and respiratory pathways.

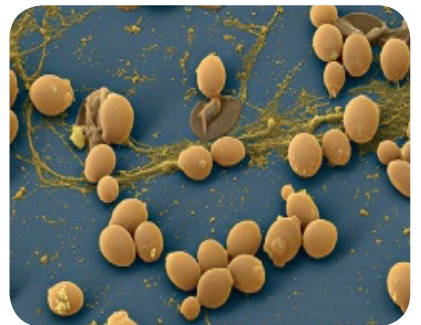
Aspergillosis FUMOUGE® (indirect haemagglutination) REF 524400



CANDIDIASIS

Fungal infections caused by candida yeasts.

Candidiasis FUMOUGE® (indirect haemagglutination) REF 513400



Biosynex also offers for the Candida identification:

- *Bichro-Latex Albicans FUMOUGE® (Latex agglutination, identification of Candida albicans) REF 524700/524900*
- *Glabrata R.T.T. FUMOUGE® (Trehalose Test, identification of Candida Glabrata) REF 314000*
- *Bichro-Dubli FUMOUGE® (Latex agglutination, identification of Candida Dublinensis) REF 810000*
- *Krusei-Color FUMOUGE® (latex agglutination, identification of Candida Krusei) REF 509800*

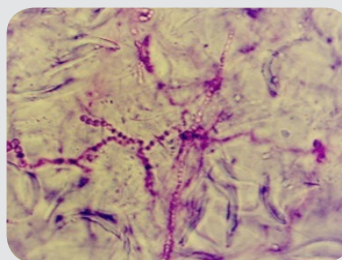
DERMATOPHYTOSIS

Direct microscopic examination

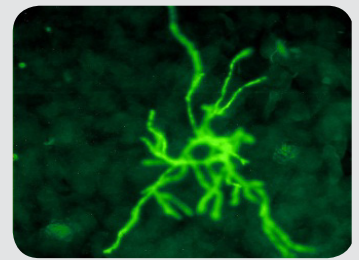
MycetColor (REF MYCOL60) & MycetFluo (REF MYFLU60)

Culture and Spore Coloring

Borelli Medium (REF BORELT18 / BORELFL20) & MycetBlue (REF MYBLU4)

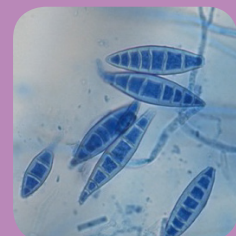


Microscopic observation of treated squames with MycetColor (White light)



Microscopic observation of treated nails with MycetFluo (Fluorescent light)

MycetBlue allows the blue coloration of fungal elements from a colony obtained on Sabouraud medium or subculture on Borelli medium.



Mycology: serology and identification



CRYPTOCOCCOSIS

Semi-quantitative Rapid Diagnostic Test for the detection of *Cryptococcus* sp. antigens in serum, plasma, whole blood and CSF. Compatible with the **Biosynex Reader**.

Biosynex Crypto PS (Immunochromatography) REF 1120001



Distributed by :

BIO SYNEX
EASY DIAGNOSTICS FOR LIFE FUMOUZE
DIAGNOSTICS

Amoebiasis

Amoebiasis H.A.I FUMOUZE® (Indirect haemagglutination) 120 tests REF 482200
Bichro-Latex Amibe FUMOUZE® (Latex agglutination) 25 tests REF 534000

Aspergillosis

Aspergillosis FUMOUZE® (Indirect haemagglutination) 20 cassettes REF 524400

Bilharziosis

Bilharziosis FUMOUZE® (Indirect haemagglutination) 120 tests REF 514000

Candidiasis

| | | |
|---|-----------|------------|
| Candidiasis FUMOUZE® (Indirect haemagglutination, serodiagnosis of candidiasis) | 120 tests | REF 513400 |
| Bichro-Latex Albicans FUMOUZE® (Latex haemagglutination, detection of <i>Candida albicans</i>) | 60 tests | REF 524700 |
| Bichro-Dubli FUMOUZE® (Latex agglutination, detection of <i>Candida dubliniensis</i>) | 100 tests | REF 810000 |
| Krusei-Color FUMOUZE® (Latex agglutination latex, detection of <i>Candida krusei</i>) | 30 tests | REF 509800 |
| Glabrata R.T.T. FUMOUZE® (Test Trehalose, identification of <i>Candida Glabrata</i>) | 40 tests | REF 314000 |

Cryptococcosis

CryptoPS 20 tests REF1120001

Dermatophytosis

| | | |
|----------------|--------------------|---------------|
| MycetColor | 60 tests | REF Mycol60 |
| MycetFluo | 60 tests | REF Myflu60 |
| MycetBlue | 2 bottles of 2 ml | REF Myblu4 |
| Borelli medium | 18 tubes of 10 mL | REF Borelt18 |
| Borelli medium | 4 bottles of 50 mL | REF BorelFL20 |

Distomatosis

Distomatosis FUMOUZE® (Indirect haemagglutination) 102 tests REF 524600

Echinococcosis

Hydatidosis FUMOUZE® (Indirect haemagglutination) 102 tests REF 524800

Toxoplasmosis

| | | |
|---|-----------|------------|
| Toxo-HAI FUMOUZE® (Indirect haemagglutination) | 120 tests | REF 525000 |
| Toxolates FUMOUZE® (Latex agglutination) | 120 tests | REF 522400 |



BIO SYNEX SA

22 Boulevard Sébastien Brant
67400 ILLKIRCH-GRAFFENSTADEN - France
Tél. : +33 3 88 77 57 52 - Fax : +33 3 88 78 76 78
E-mail : export@biosynex.com
www.biosynex.com

Carefully read the instructions on the labeling and / or reagent notices.